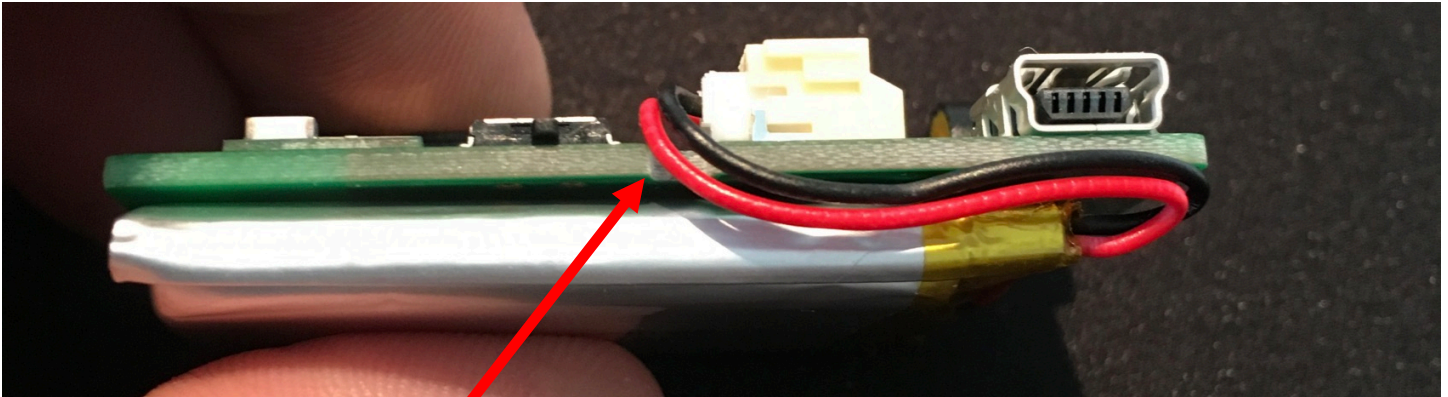
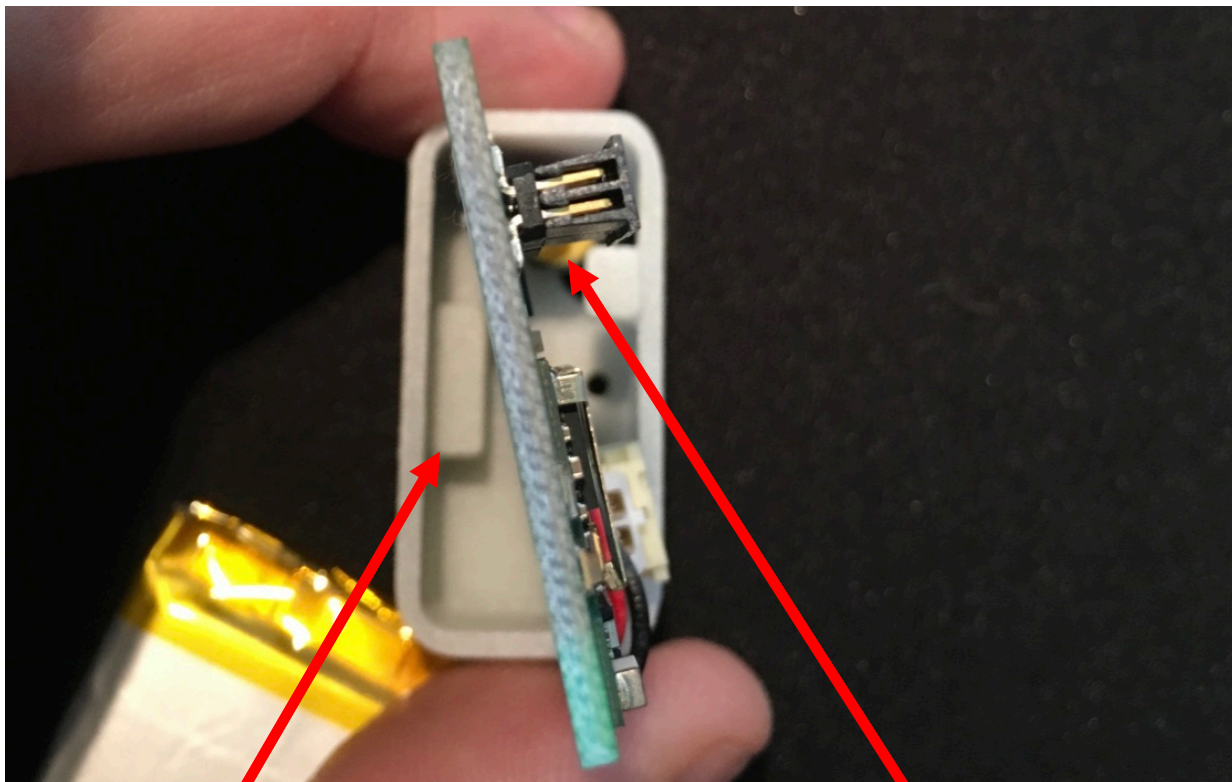


- 1.) Start by aligning the Battery and RileyLink. Pre-fit and run the battery wires so that they flow down thru the notch in the RileyLink board. Align the battery to the back end of the RileyLink.



Wire Pass Through Notch in RileyLink Board

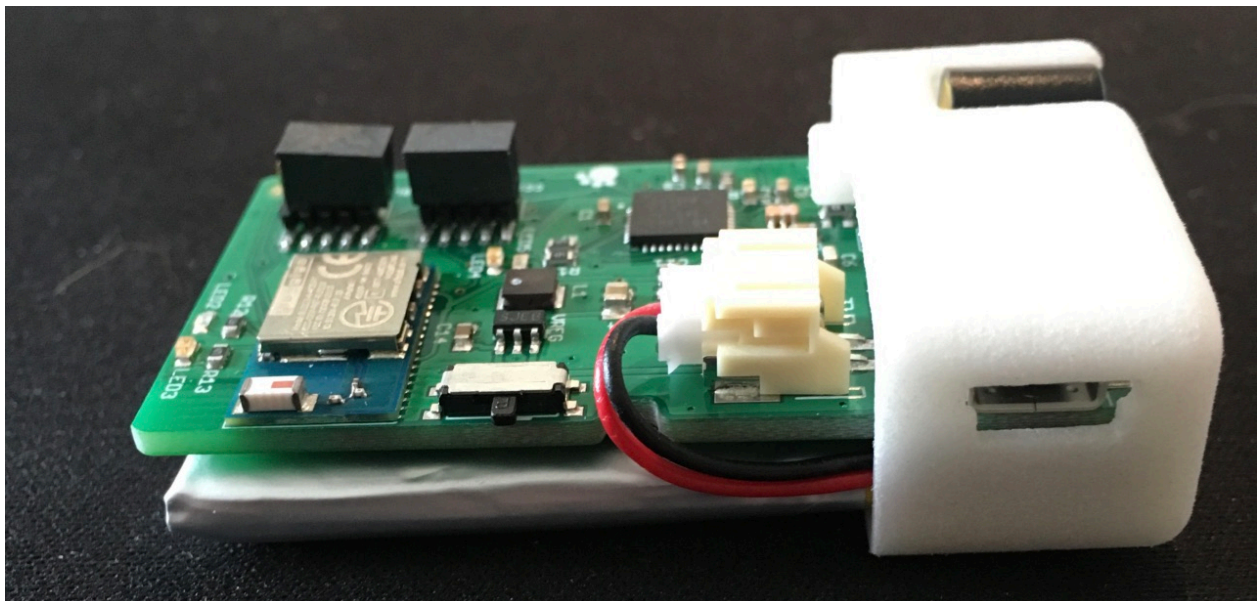
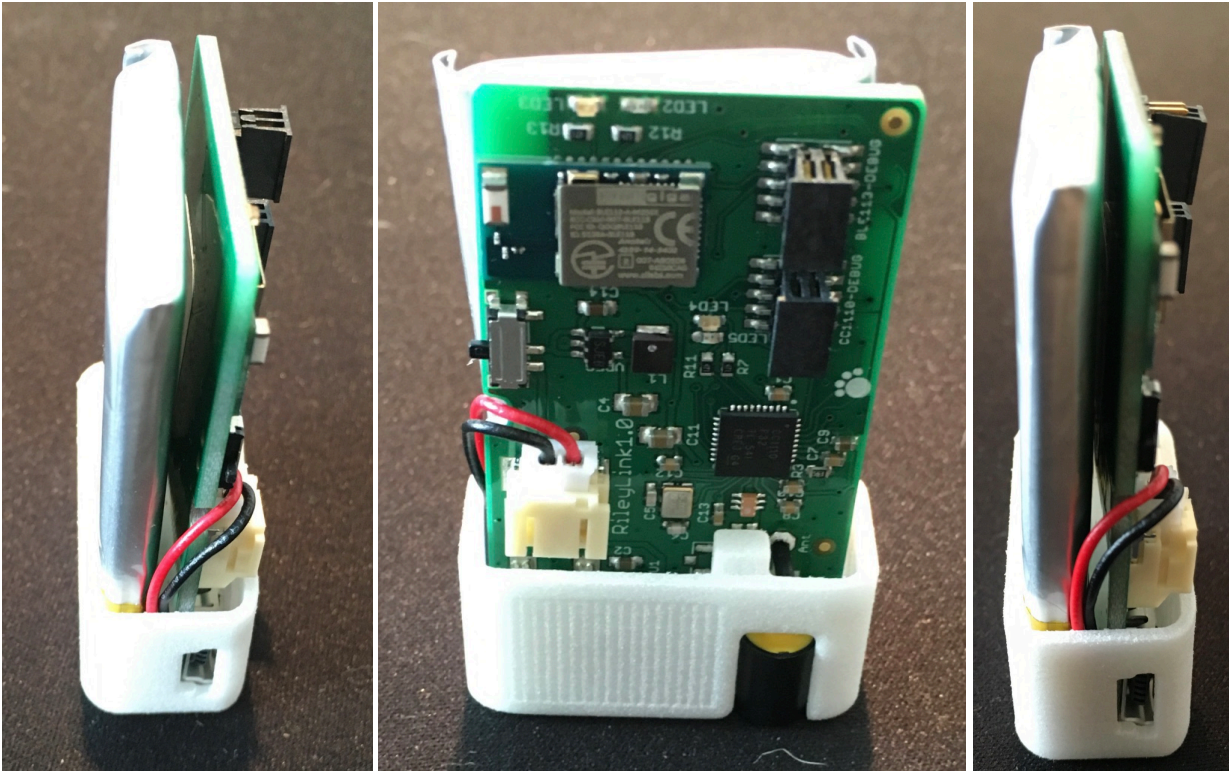
- 2.) Place the RileyLink into the SlimCase Top Cap with the antenna pointing down. Insert it first at a perpendicular angle to the Top Cap, so that it fits past the Plastic Bumper inside the cap. This will make it easy for you to place the Top Cap on and have the antenna aligned. The Bumper can make it difficult to place the Cap on this is just an easy way to get past the Bumper.



Plastic Bumper Inside Top Cap

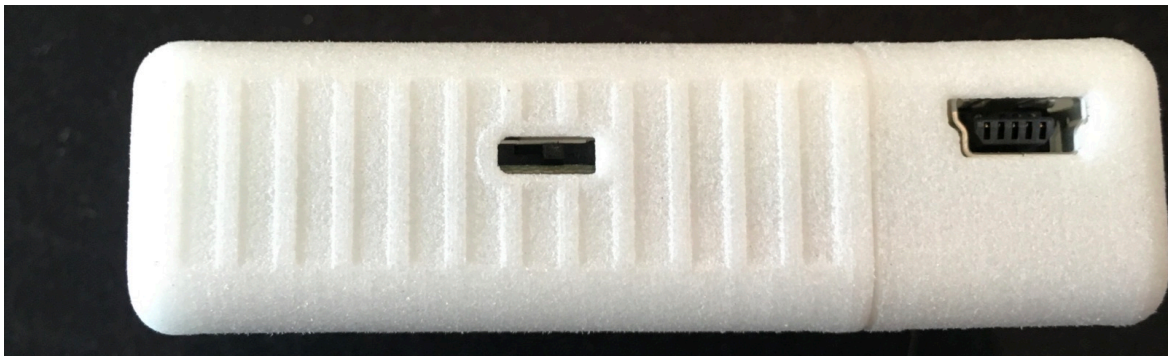
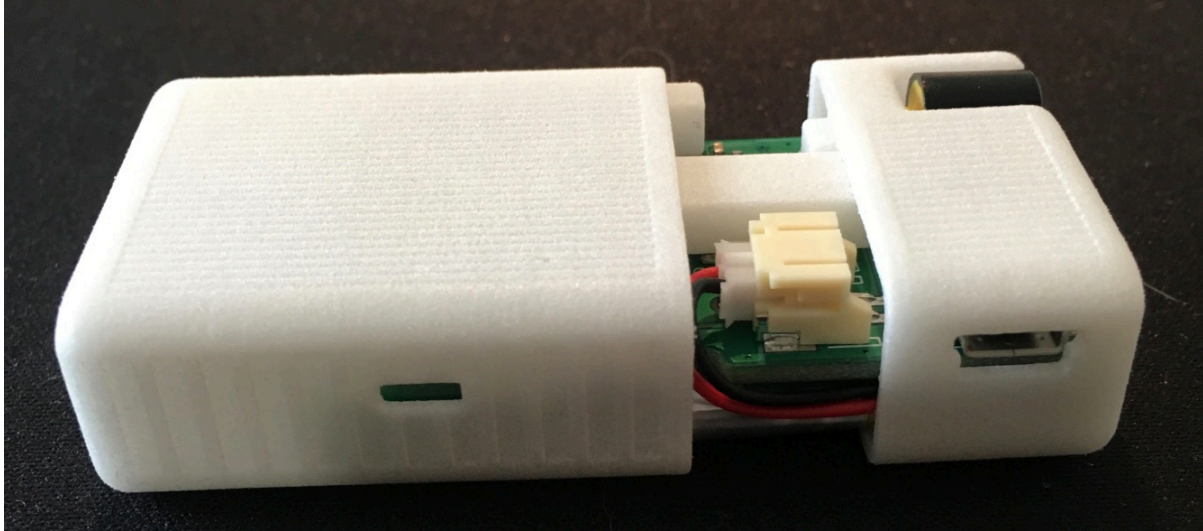
Antenna Down

- 3.) Insert and Align the RileyLink Board with the Top Cap so that the antenna is aligned and protruding from the antenna hole. Insert the battery into the top cap so that it is resting against the Plastic Bumper. The battery and RileyLink should be even in height and be ready for insertion into the Case Bottom.





- 4.) Insert the assembled RileyLink, Battery, and Top Cap into the Case Bottom. Make sure the wires have stayed in place and are still running down past the notch in the RileyLink Board and take care to slowly slide the entire assembly into the bottom. It may take some wiggling and adjustment. Just take your time and be gentle it will fit.



- 5.) Install the screw to the top of the case and tighten so that the screw sits flush with the top of the case. Be careful to not overtighten as you can strip the plastic.

